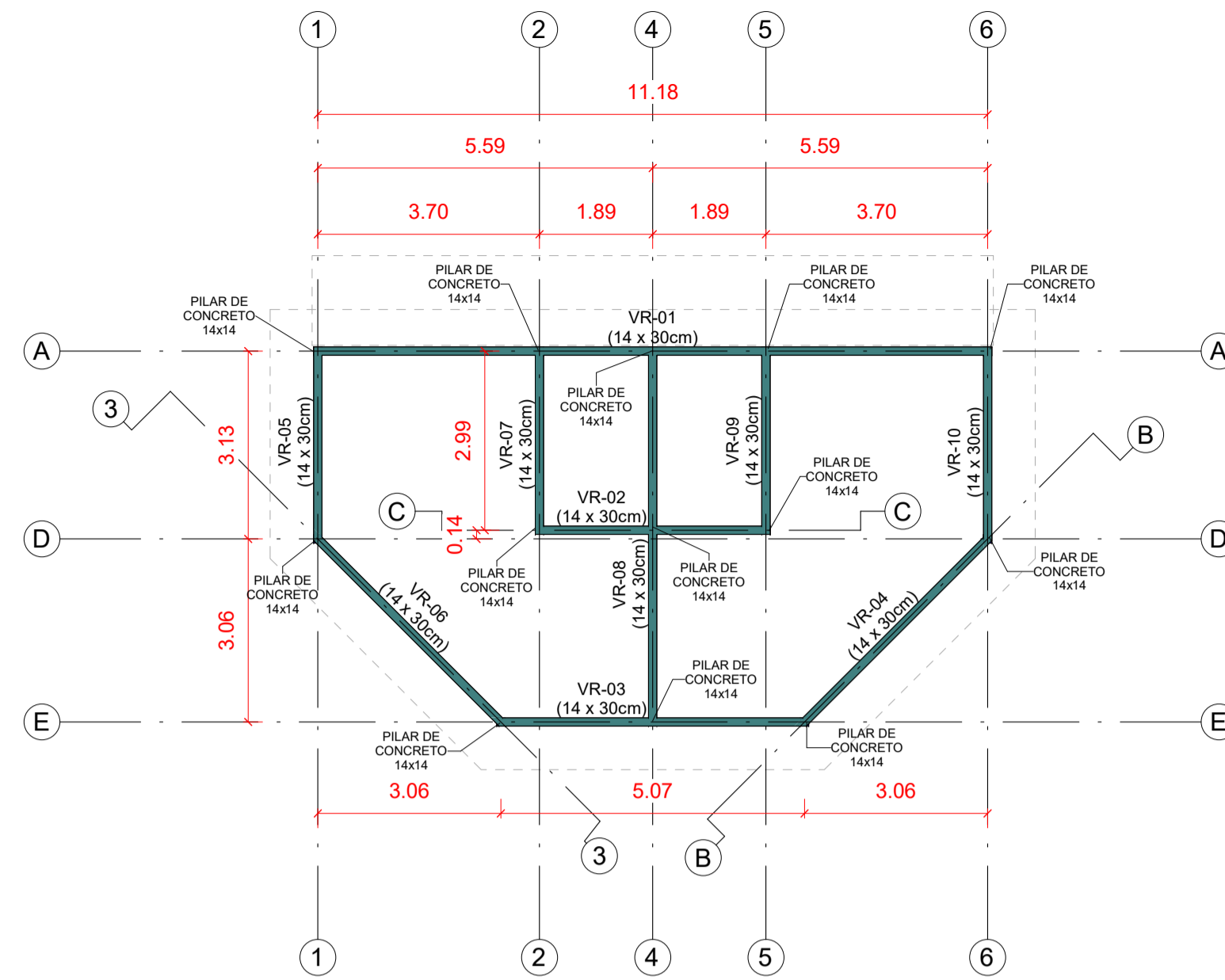
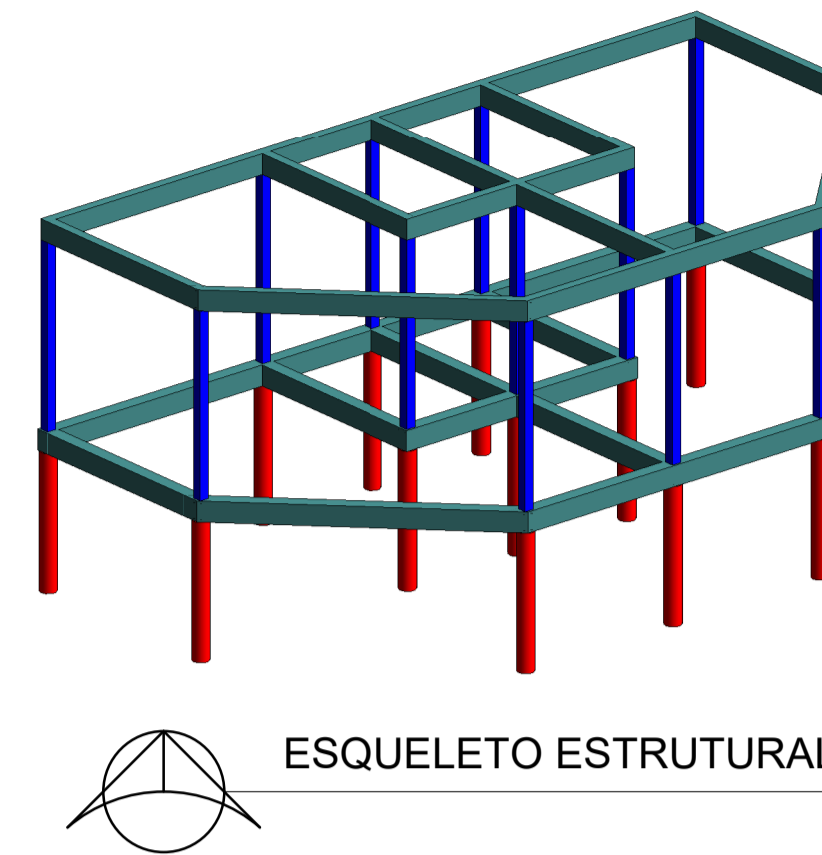


ESTRUTURAL - ESTACAS/VIGAS
1 : 100



ESTRUTURAL - PILARES/VIGAS
1 : 100

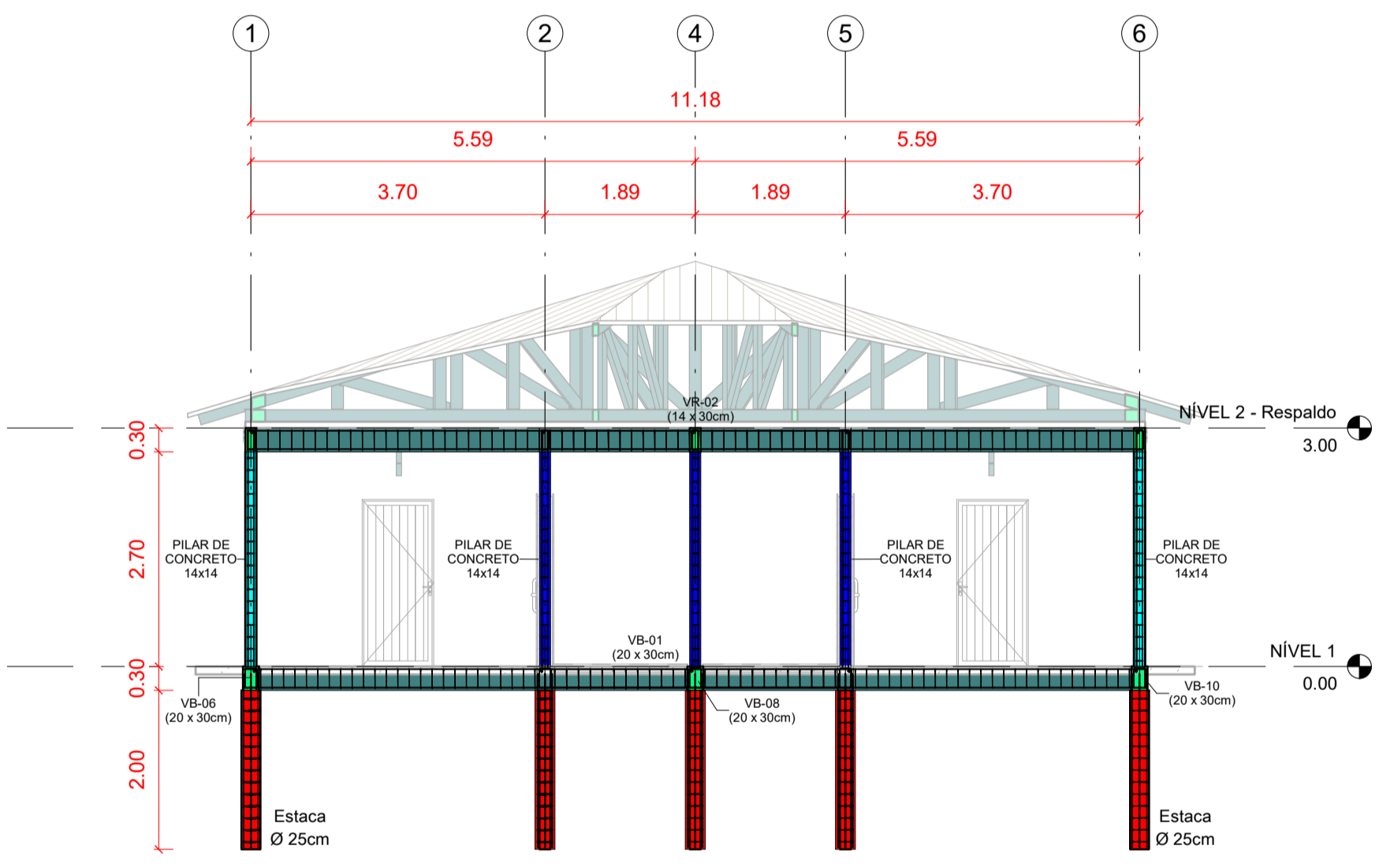
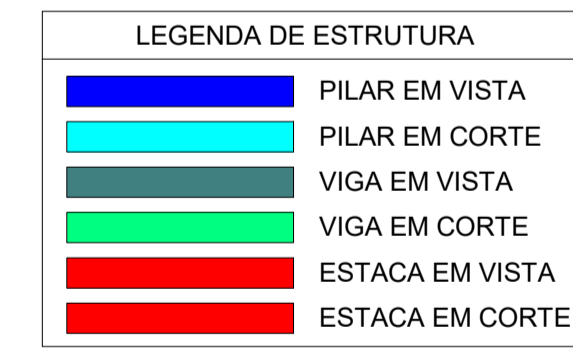


Construir - Tabela de Vergalhões					
N	Diâmetro da barra	Qtde Pcs	Comprimento da barra	Comprimento total da barra	Nome Hospedeiro
4.2 mm					
N1	4.2 mm	234	0.44 m	102.96 m	Pilar
N2	4.2 mm	320	0.76 m	243.20 m	Viga Respaldo
N3	4.2 mm	313	0.88 m	275.44 m	Viga Baldrame
N4	4.2 mm	169	0.89 m	150.41 m	Estaca
			1036	772.01 m	
8.0 mm					
N5	8.0 mm	52	2.18 m	113.36 m	Estaca
N6	8.0 mm	52	2.98 m	154.96 m	Pilar
N7	8.0 mm	8	3.08 m	24.64 m	Viga Respaldo
N8	8.0 mm	8	3.19 m	25.52 m	Viga Baldrame
N9	8.0 mm	8	3.22 m	25.76 m	Viga Respaldo
N10	8.0 mm	8	3.33 m	26.64 m	Viga Baldrame
N11	8.0 mm	4	3.87 m	15.48 m	Viga Respaldo
N12	8.0 mm	4	3.98 m	15.92 m	Viga Baldrame
N13	8.0 mm	8	4.47 m	35.76 m	Viga Respaldo
N14	8.0 mm	8	4.52 m	36.16 m	Viga Baldrame
N15	8.0 mm	4	5.16 m	20.64 m	Viga Respaldo
N16	8.0 mm	4	5.27 m	21.08 m	Viga Baldrame
N17	8.0 mm	4	6.28 m	25.12 m	Viga Respaldo
N18	8.0 mm	4	6.39 m	25.56 m	Viga Baldrame
N19	8.0 mm	4	11.27 m	45.08 m	Viga Respaldo
N20	8.0 mm	4	11.38 m	45.52 m	Viga Baldrame
		184		657.20 m	

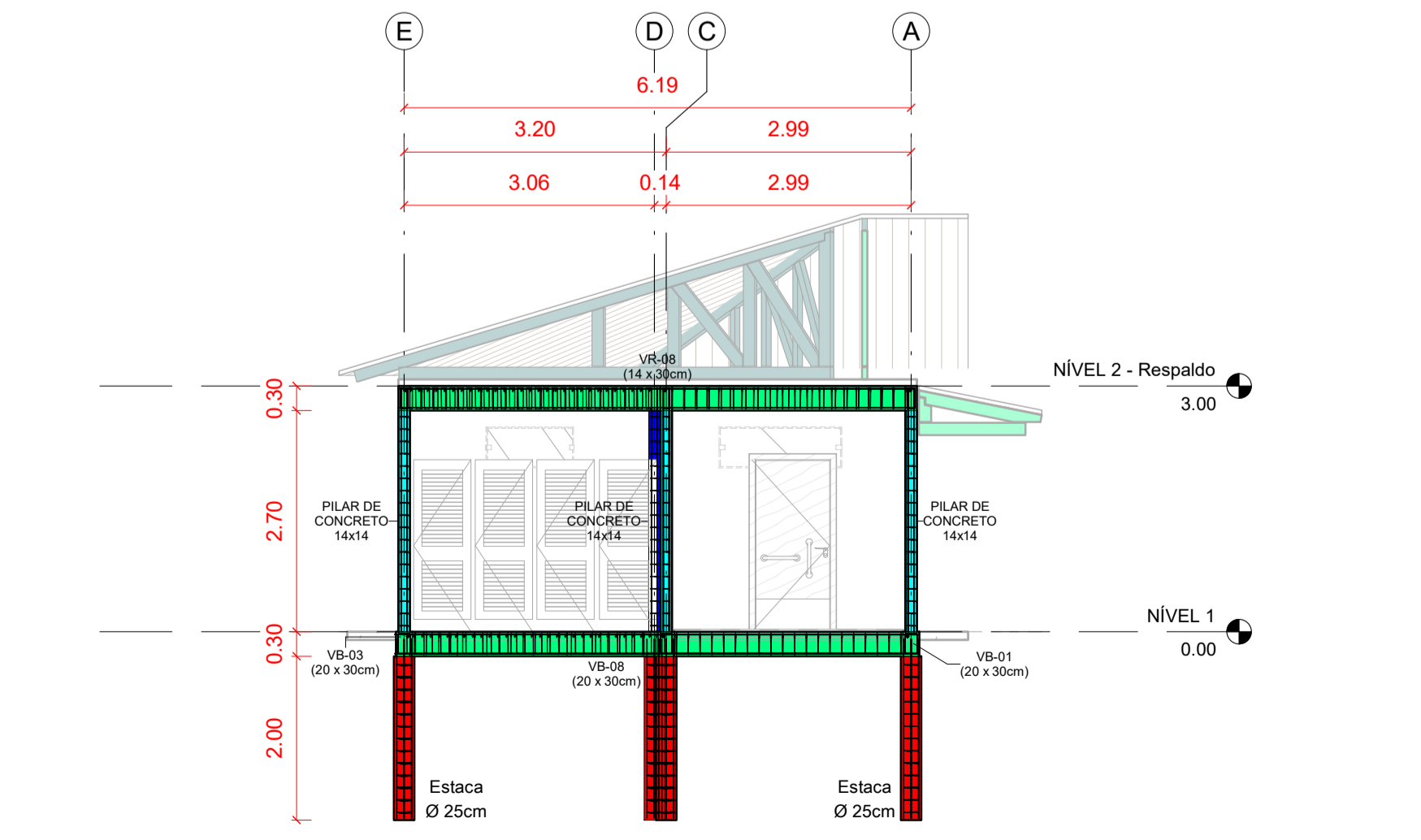
Construir - Tabela Concreto Vigas				
Qtde	Marca	Tipo	Comp	Volume
14 x 30cm				
1	VR-01	14 x 30cm	11.18	0.475 m³
1	VR-02	14 x 30cm	3.78	0.159 m³
1	VR-03	14 x 30cm	5.07	0.213 m³
1	VR-04	14 x 30cm	4.32	0.181 m³
1	VR-05	14 x 30cm	3.13	0.125 m³
1	VR-06	14 x 30cm	4.32	0.181 m³
1	VR-07	14 x 30cm	2.99	0.126 m³
1	VR-08	14 x 30cm	6.19	0.248 m³
1	VR-09	14 x 30cm	2.99	0.120 m³
1	VR-10	14 x 30cm	3.13	0.133 m³
				1.961 m³
20 x 30cm				
1	VB-01	20 x 30cm	11.18	0.683 m³
1	VB-02	20 x 30cm	3.78	0.227 m³
1	VB-03	20 x 30cm	5.07	0.304 m³
1	VB-04	20 x 30cm	4.32	0.259 m³
1	VB-05	20 x 30cm	3.13	0.174 m³
1	VB-06	20 x 30cm	4.32	0.259 m³
1	VB-07	20 x 30cm	2.99	0.179 m³
1	VB-08	20 x 30cm	6.19	0.347 m³
1	VB-09	20 x 30cm	2.99	0.167 m³
1	VB-10	20 x 30cm	3.13	0.191 m³
				2.791 m³
Total geral				4.752 m³

Construir - Tabela Concreto Estaca				
Qtde	Tipo	Comprimento	Volume	Volume Total
13	Ø 25cm	2.00	0.098 m³	1.276 m³

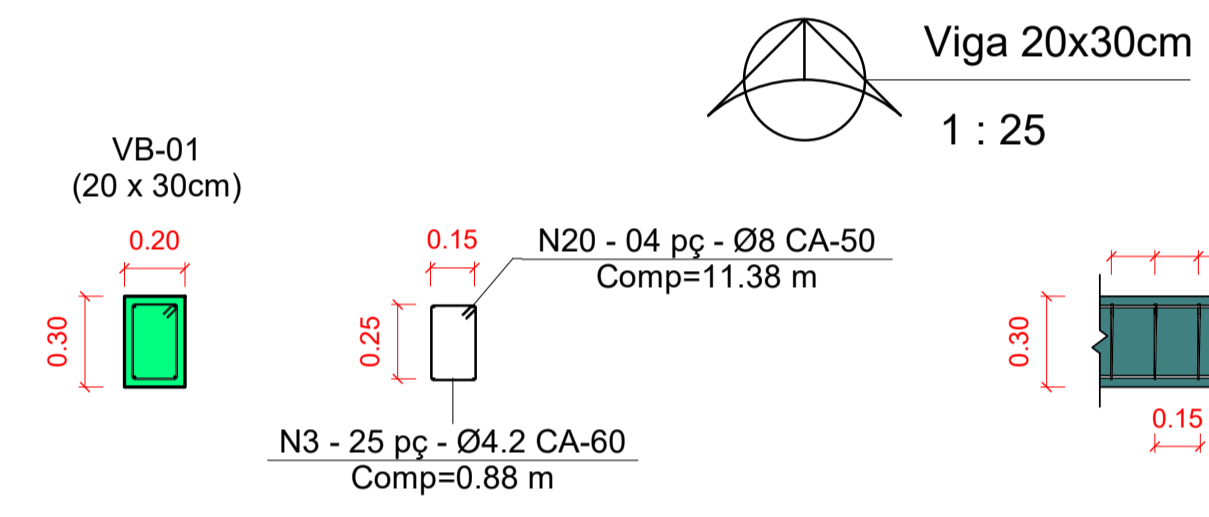
Construir - Tabela Concreto Pilares				
Qtde	Tipo	Comprimento	Volume	Volume Total
PILAR DE CONCRETO 14x14				
13	PILAR DE CONCRETO 14x14	2.70	0.053 m³	0.688 m³
Total geral				0.688 m³



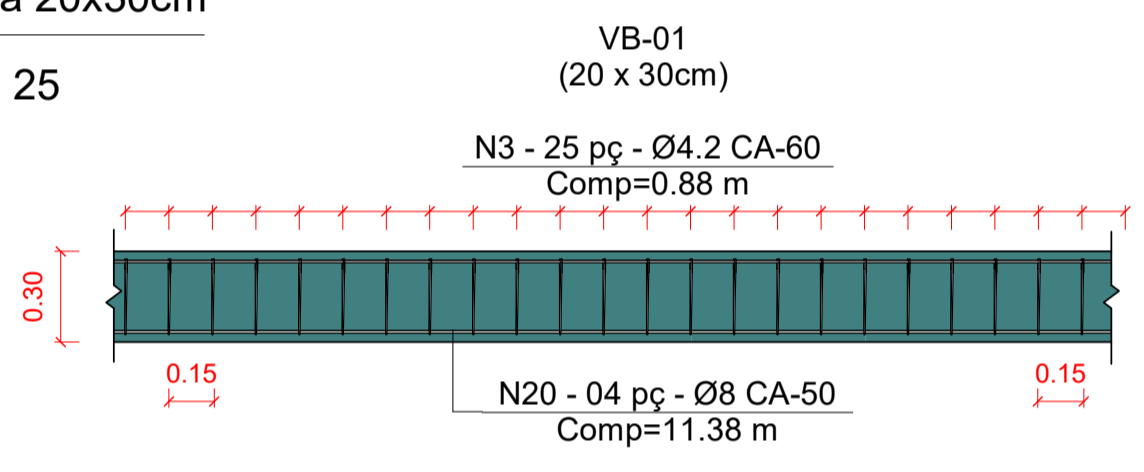
A
1 : 75



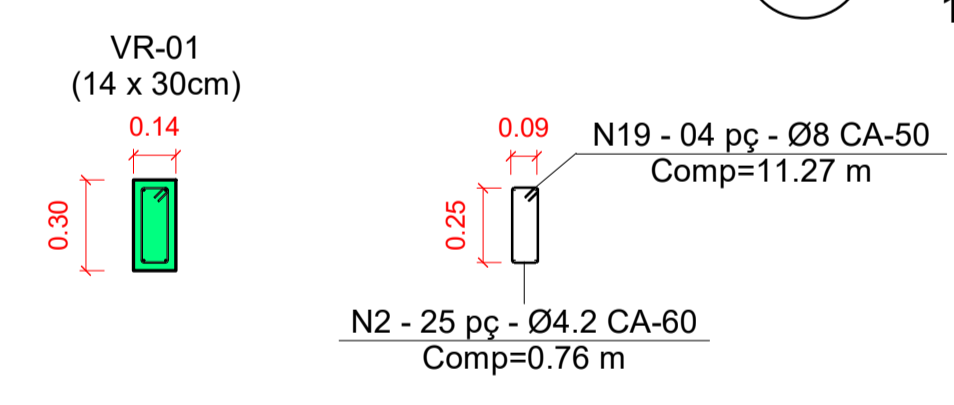
B
1 : 75



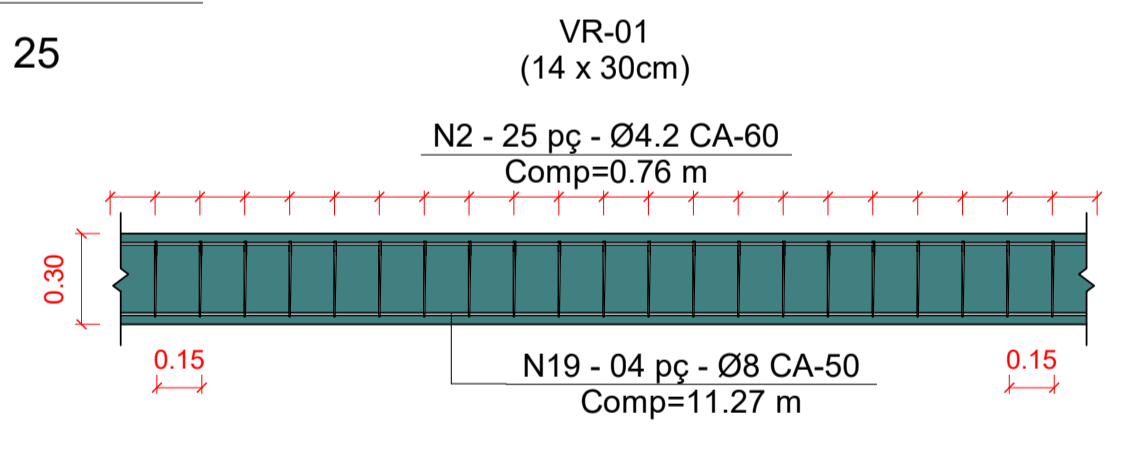
Viga 20x30cm
1 : 25



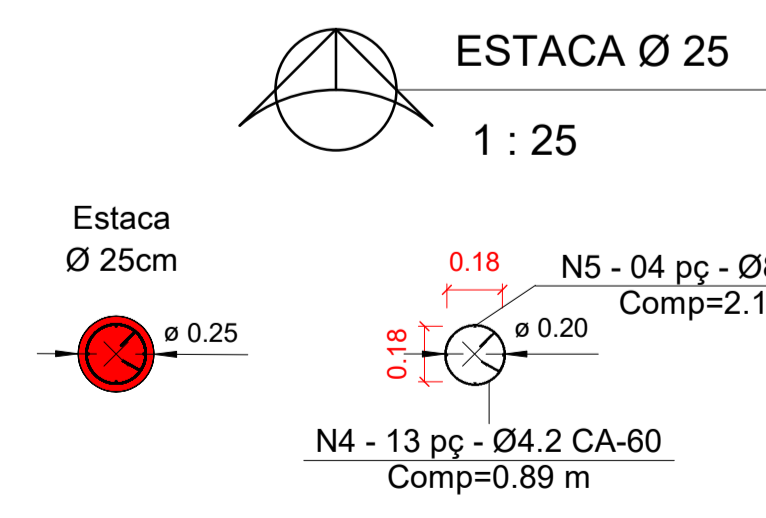
VB-01
(20 x 30cm)



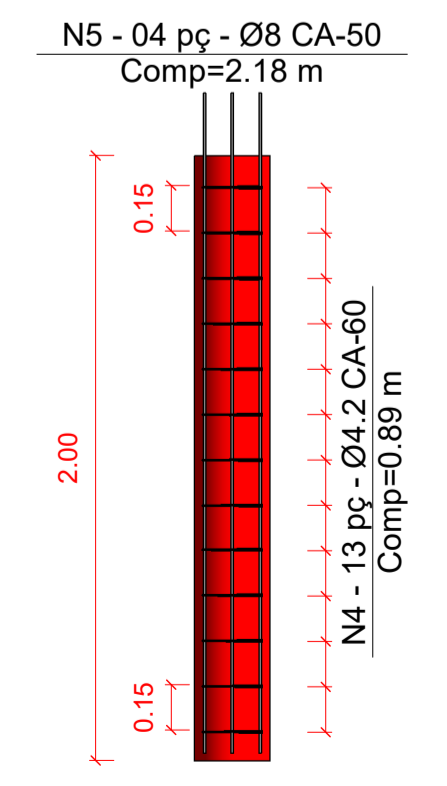
Viga 14x30cm
1 : 25



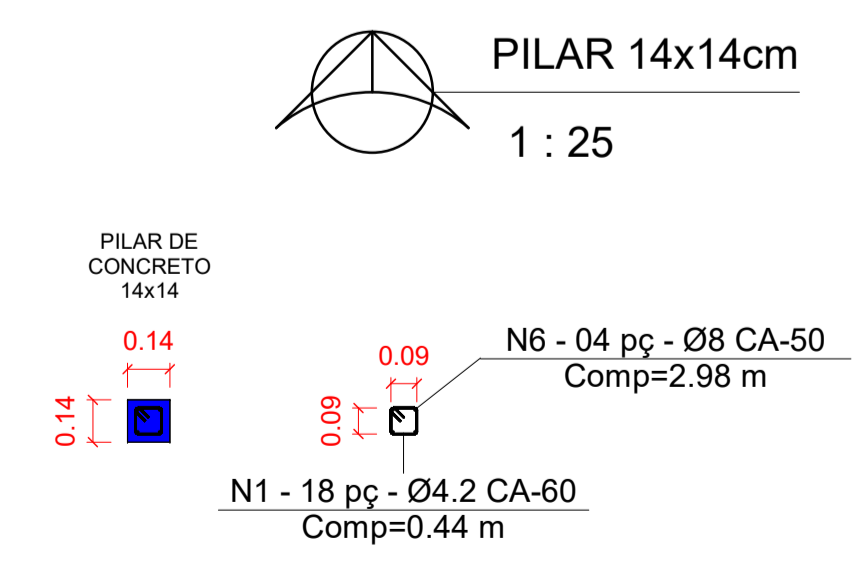
VR-01
(14 x 30cm)



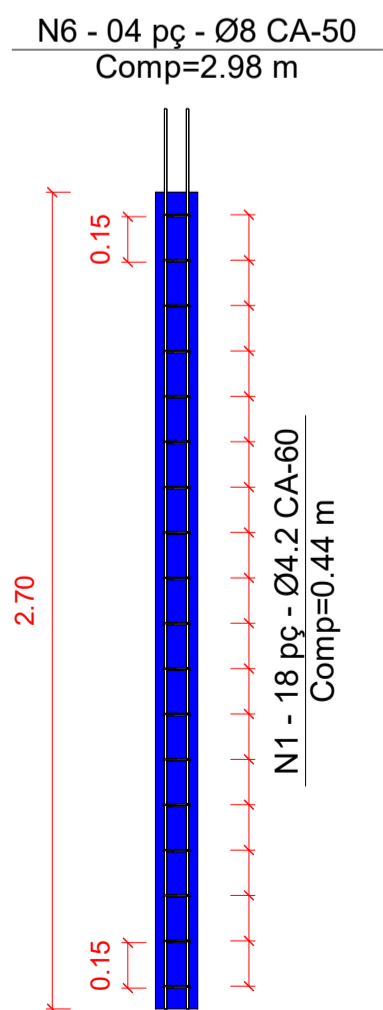
ESTACA Ø 25
1 : 25



N5 - 04 pc - Ø8 CA-50
Comp=2.18 m



PILAR 14x14cm
1 : 25



N1 - 18 pc - Ø4.2 CA-60
Comp=0.44 m

OBRA/ENDEREÇO: LOTE 2 - CONSTRUÇÃO DE SANITÁRIOS PÚBLICOS RUA GETÚLIO VARGAS - ESTRADA DA SERRA GRANDE, S/N - SAPOPEMA - PR.

CONTEÚDO DA PRANCHA: PROJETO EXECUTIVO - ESTRUTURAL PLANTA BAIXA/CORTES

RESPONSÁVEL TÉCNICO: FÁBIA ROBERTA P. ELEUTÉRIO DE OLIVEIRA
Engenheira Civil
Crea SP nº 506.345.854-4/D - Visto Pr nº 145077

PROPRIETÁRIO: PAULO MAXIMIANO DE SOUZA JUNIOR
Prefeito Municipal
PREFEITURA MUNICIPAL DE SAPOPEMA
C.N.P.J: 76.167.733/0001-87

ESCALA: Como indicado

COLABORADORES: Jean Carlos Cunha de Almeida
Engenheiro Civil - Efetivo da Prefeitura de Sapopema
CREA SP 5061984621/D

DATA: 22/10/2021

PRANCHA: 01/01

PARANÁ GOVERNO DO ESTADO
SECRETARIA DO DESENVOLVIMENTO SUSTENTÁVEL E DO TURISMO

AGUASPARANÁ Instituto das Águas do Paraná

PREFEITURA MUNICIPAL DE SAPOPEMA POBOS DO BRASIL 1988